



Guide for accessing our Edinburgh space

LGBT Health and Wellbeing
4 Duncan Place
EH6 8HW
Edinburgh

Phone: 0131 564 3970

Email: admin@lgbthealth.org.uk

Website: lgbthealth.org.uk



Content

- [Welcome](#)
- [How to get to Duncan Place](#)
- [How to access Duncan Place](#)
- [How to access LGBT Health and Wellbeing](#)

Welcome

LGBT Health and Wellbeing is located in Duncan Place Community and Enterprise Hub, at the bottom of Leith Walk next to the Leith Links.

Duncan Place is where our staff team work from and where we deliver our services like our counselling service and helpline. We also use the premises to host our social events and groups.

Please do speak to us if you have any specific support needs to access our space.

Duncan Place is a community hub and the entrance area features information from other services working in the building, including groups and events that they host. In our own space, we have a community notice board with information about our services, events, groups and things going on more broadly in the community. If you wish to receive regular updates about what we do, [sign-up to one of our newsletters](#).

How to get to Duncan Place

By foot or wheel

Duncan Place is approximately a 40 minutes' walk or wheel (1.6 miles or 2.5 kilometres) from Edinburgh City Centre. Walk or wheel all the way down Leith Walk, then turn right on Duke Street, then 3rd left on Duncan Place.

By bicycle

There are 5 bicycle racks available on the grounds of Duncan Place, and can accommodate up to 10 bicycles.



By bus

Bus routes 1, 7, 14, 16, 25, 34, 35, and 49 all drive through the city centre and stop within a few minutes of Duncan Place (at the foot of Leith Walk, on Leith Links or Duke Street). Use [Lothian Buses Journey Planner](#) to plan your bus trip to us.

By tram

The nearest tram stop to Duncan Place is on Constitution Street (stop Foot of the Walk) which is a 5-minutes' walk or wheel (0.2 miles or 0.3 kilometres) to Duncan Place. Use [Edinburgh Trams Journey Planner](#) to plan your tram trip to us.

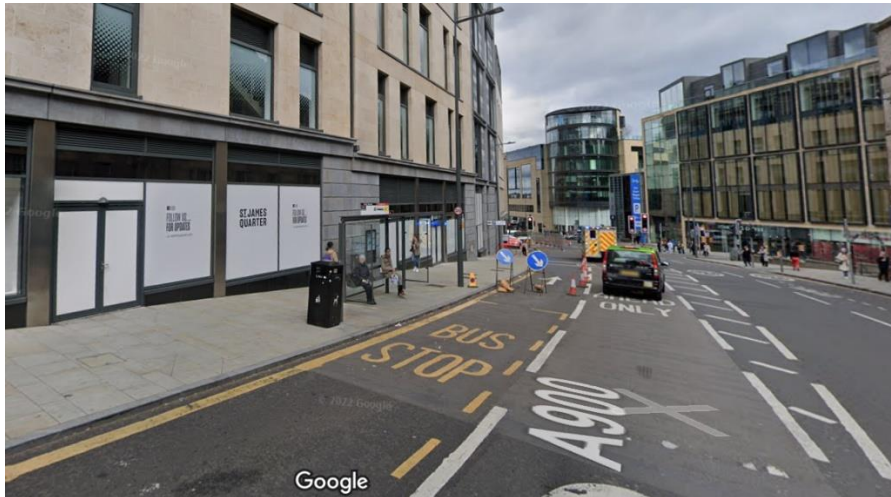


By train

The nearest train station is Edinburgh Waverley, which is a 40-minutes' walk or wheel (1.6 miles or 2.5 kilometres) to Duncan Place.

When you come out of the train station, you can also catch buses:

- 1 (from Leith Street) down to Leith Links (through Easter Road)



- 7, 14 and 16 (from Leith Street) down to the foot of Leith Walk
- 25 and 49 (from Leith Street) down to Duke Street



You can also catch the tram from St Andrew Square.



By car

- Duncan Place is a N8 zone controlled Monday to Friday (8.30am - 5.30pm)
- The parking charge is £3.10 per hour (you can park up to 6 hours)
- You can pay by phone 0131 516 4000 quoting location 12714 or pay at a machine across Leith Primary School
- There are 2 disabled parking spaces available on the grounds of Duncan Place
- Blue badge holders can park on a first come basis (we can't reserve the space for you)



How to access Duncan Place

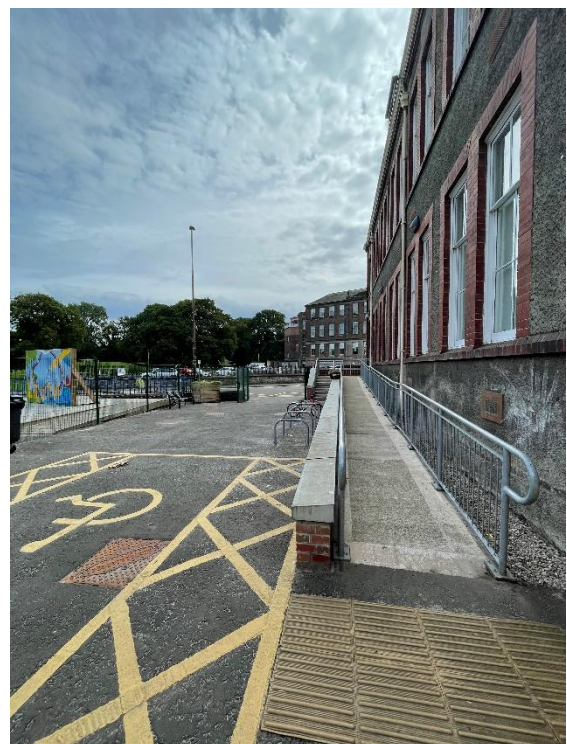
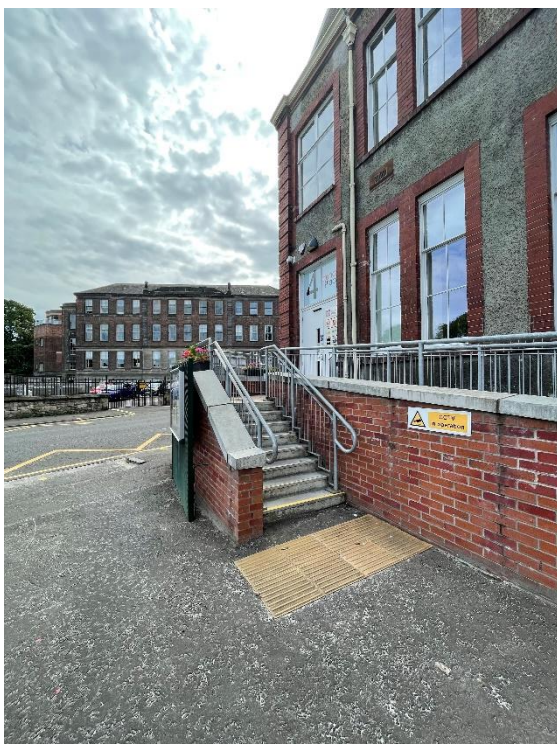
Duncan Place is located:

- on 4 Duncan Place next to Leith Primary School
- and just across Leith Links



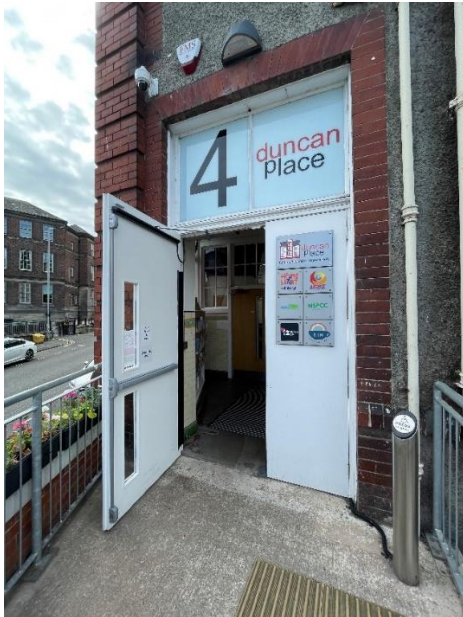
You can access Duncan Place:

- by stairs
- by a ramp



To get into Duncan Place:

- Come in through the outside door
- The door is automatic and operated through a push pad (press to open)
- You then arrive in the foyer
- Ring the reception and staff will unlock the door (pull to open)
- If you are using a wheelchair, reception staff will be happy to help open the door



Duncan Place reception:

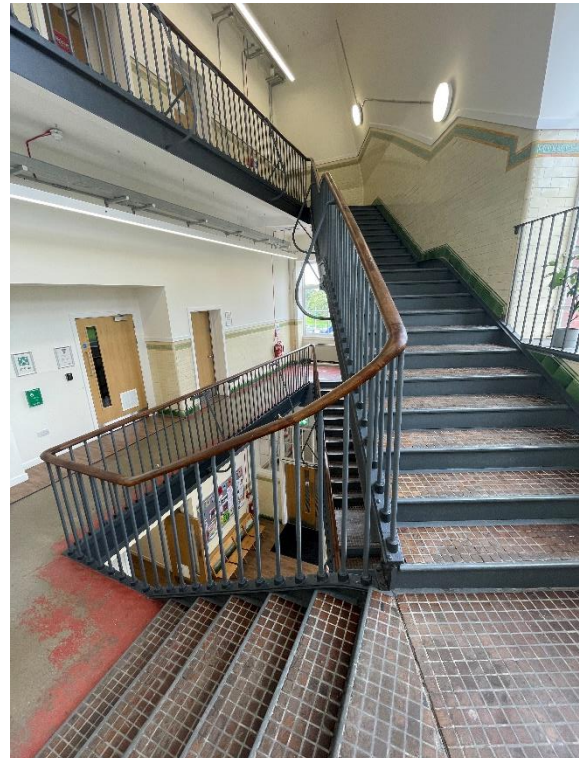
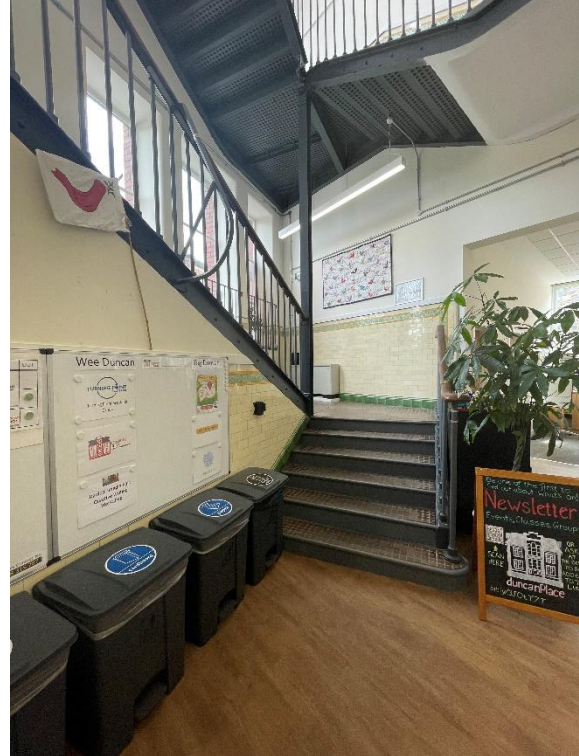
- During office hours, the reception is staffed (reception desk is at the back)
- A lift is available on the right of the reception desk
- Two accessible gender-neutral toilets and a changing space are available at each side of the reception desk



How to access LGBT Health and Wellbeing

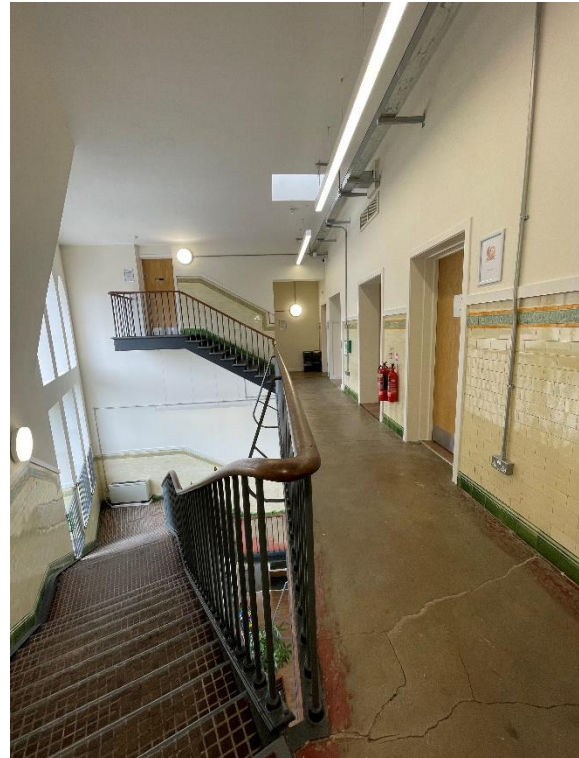
We are located on the second floor (the last floor).

- You can take the lift
- Or go up the stairs

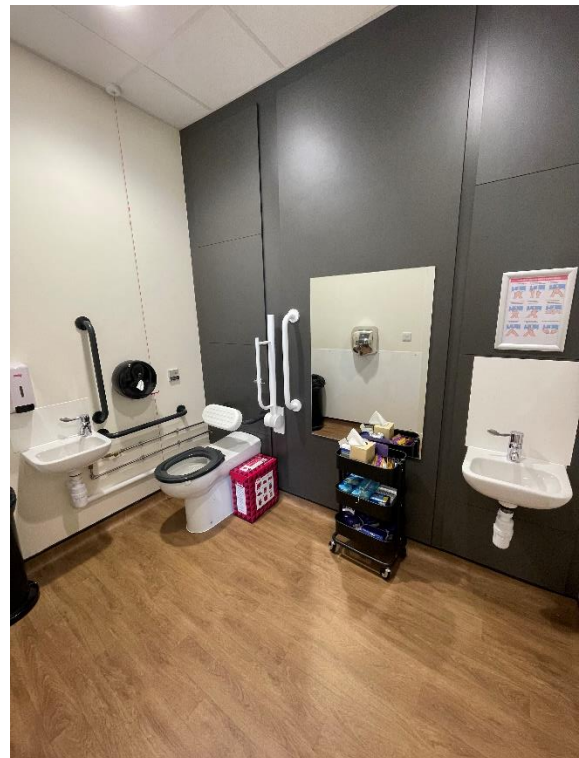
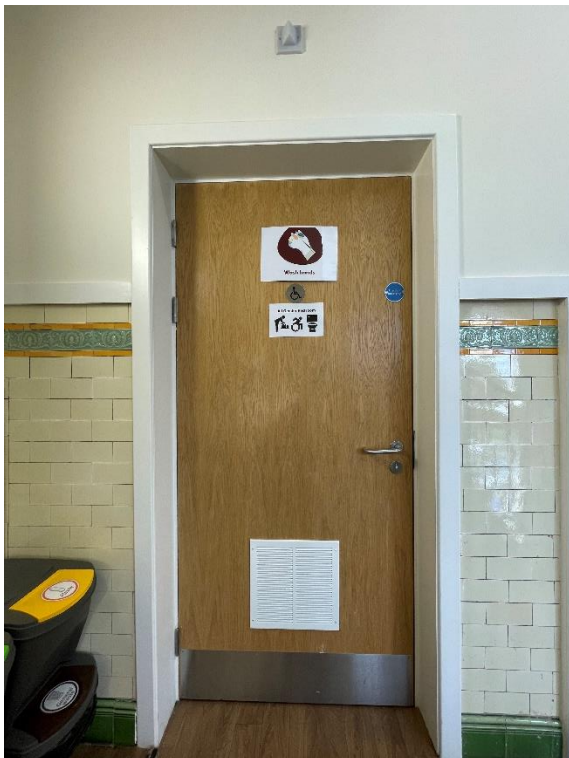


The second floor (LGBT Health and Wellbeing)

- Arrive from the lift
- Arrive from the stairs



A gender-neutral and wheelchair accessible toilet is available on the second floor next to the lift (more toilets are available on the first floor though gendered)



Entrance to LGBT Health and Wellbeing

- Public entrance is the second door along the corridor (from the stairs) or first door on the left (from the lift)
- Ring the reception bell and a staff will come open the door for you
- If you arrive in advance of your appointment, we will direct you towards our reception area



Reception area

Please note our reception area is within an office room where our staff work



Our rooms

Nicky Stones room

- For counselling sessions
- Small meetings



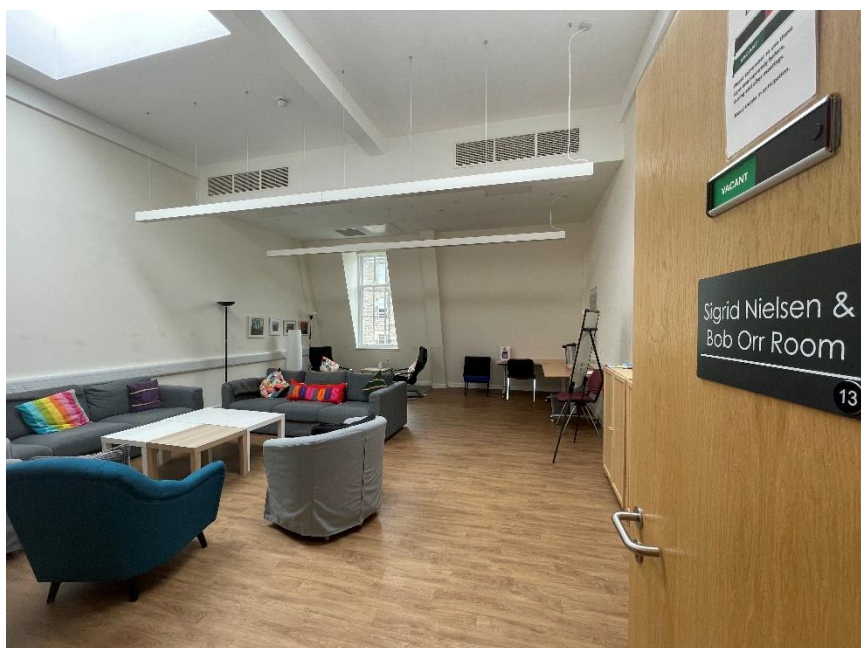
Cecil Sinclair room

- For counselling sessions
- Small meetings



Sigrid Nielsen and Bob Orr room

- For counselling sessions
- Group meetings
- Social events and groups



Exit our office

- Leave the same way you arrived
- Make sure to check our community notices board for events and opportunities

- Press the green button on the wall next to the door to unlock it, push to open

If you are using a wheelchair, our staff will be happy to help open the door for you

